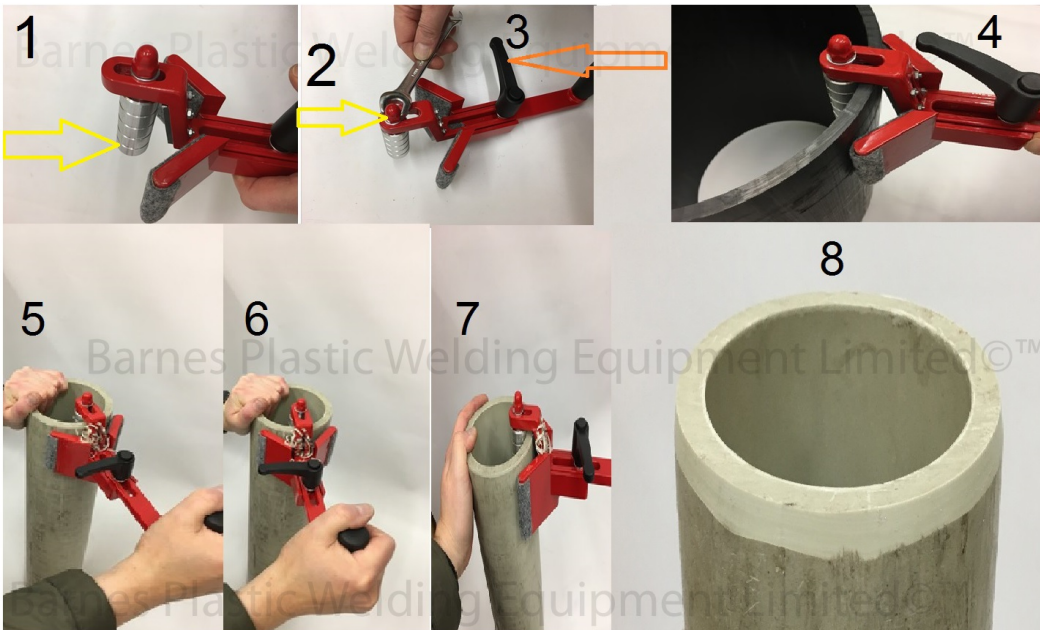


Chamfering & Bevelling Tool

How To Use Guide



1 - Pipe Central Register with Roller

2 - Adjust Pipe Central register with 13mm Spanner.

3 - Adjustable/Lockable Tool Handle

4 - Place Pipe Central Register into pipe and push the v shape part of tool up towards the outside of the pipe.

Then lock the Tool Handle but make sure the blades are sitting proud of the outside diameter of the pipe.

5-6-7 Pull the handle downwards and rotate it clockwise until you feel the blades start cutting into the outer edge of the pipe.

8 - Keep going until the pipe is chamfered/bevelled.