



FORSTHOFF DB Machine Set Up - In Images

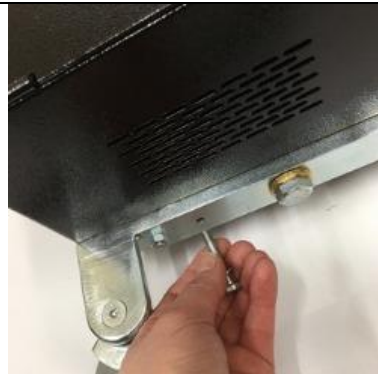
| Machine Before Assembly | Assembled Machine |
|-------------------------|-------------------|
| | |

Main Machine Parts Breakdown

| Main Machine | Machine Handle | Un-roll Device/Holder |
|---------------|----------------|-----------------------|
| | | |
| Webbing Guide | Heat Reflector | Webbing Discs |
| | | |



Set Up Procedure – In Images



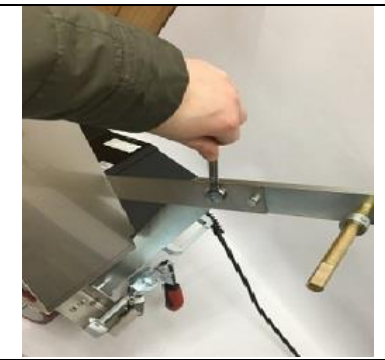
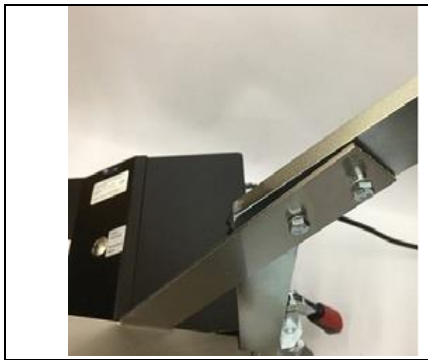
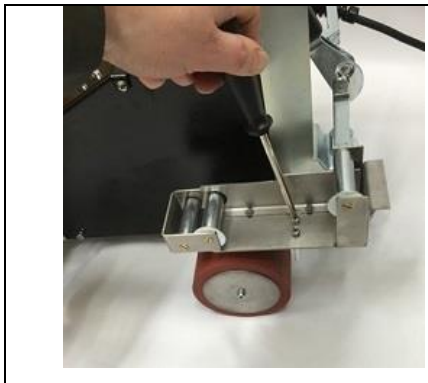
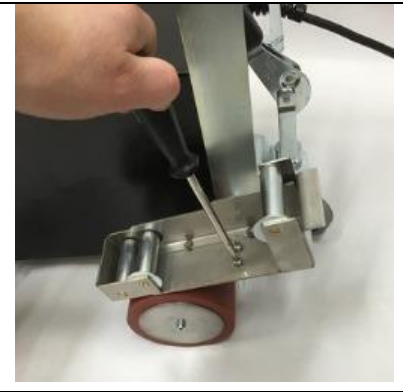
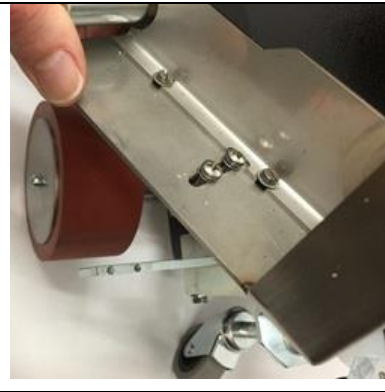
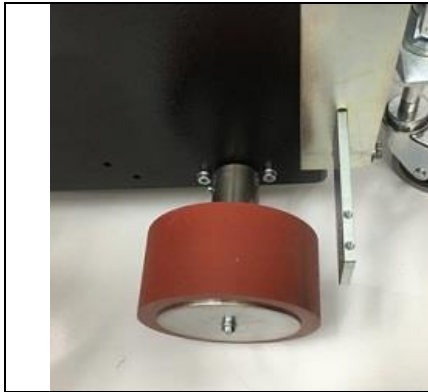
Barnes

Plastic Welding Equipment Ltd.



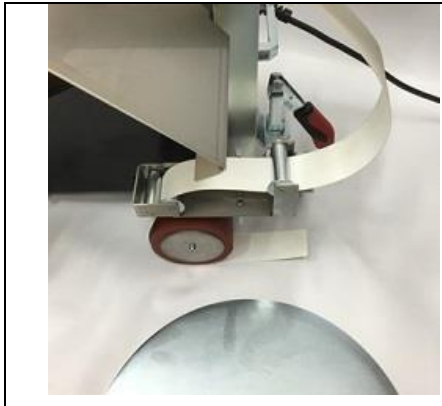
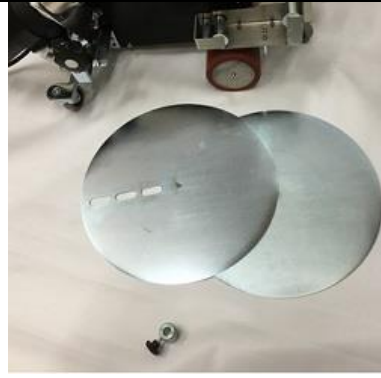
Barnes

Plastic Welding Equipment Ltd.



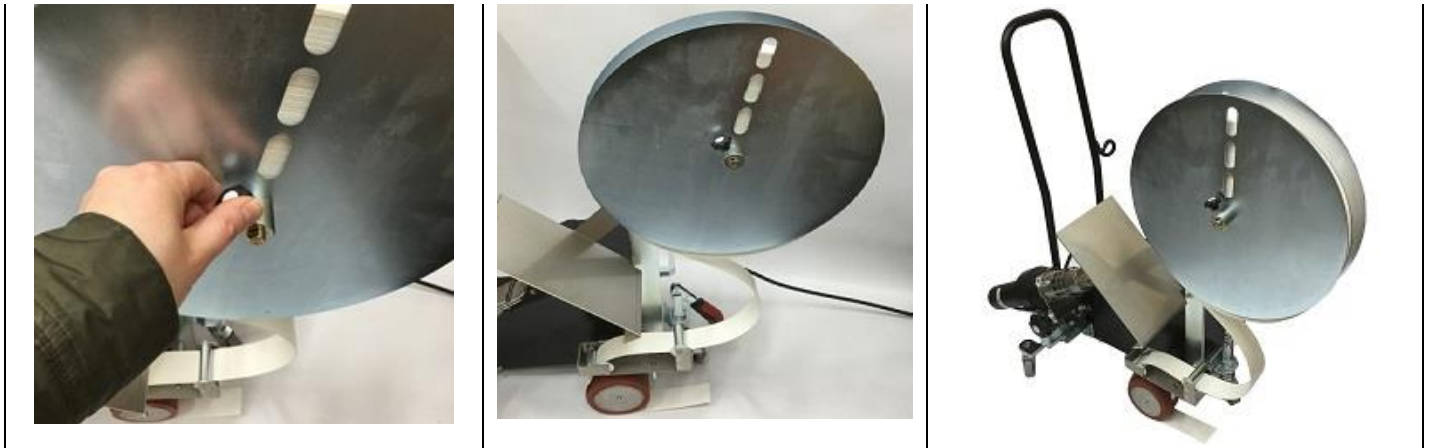
Barnes

Plastic Welding Equipment Ltd.



Barnes

Plastic Welding Equipment Ltd.



50mm Webbing/Tape Nozzle Set Up



Disclaimer: The images and information provided are meant as a guide of how to assemble the machine. Once the customer has taken delivery of the machine and assembled it Barnes Plastic Welding Equipment Limited will not accept responsibility for how the machine is then used.